

Burglar resistance

Doors





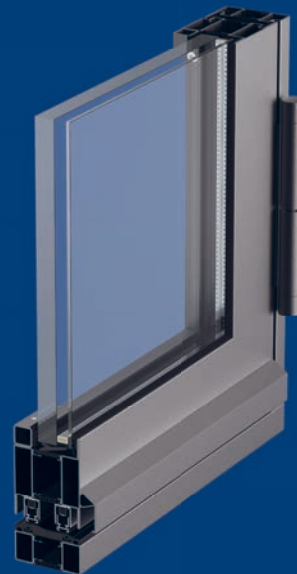
forster fuego light
EI30/EI60 to RC3



forster presto 50
up to RC2



forster presto 60s
up to RC3



forster unico
up to RC3

Burglar-resistant doors by Forster

Door elements with burglar resistance are now required in a wide range of building types and applications, both outdoors and indoors. Burglar-resistant door and fixed glazing solutions offer good mechanical protections and can be combined with other safety functions such as fire and smoke protection or emergency exit and panic door closures.

Forster integrates these important functions into the systems forster fuego light, presto and uni-co – without compromising on the aesthetics, design options and durability. Our tried-and-tested, flexible steel-glass structures for outdoor and indoor use stand out thanks to their premium quality, ultra-thin face widths and decades-long service life.

forster fuego light

Combo solution with burglar resistance

The fire-resistant forster fuego light system for doors and fixed glazing for indoor applications can be combined with burglar resistance and ensures maximum stability even in large dimensions: Thanks to the structure made of high-quality steel and stainless steel, even high leaf weights can be used so that the safety requirements can be met.

As a flush sheet metal element, the multi-functional system can also cover burglar resistance requirements up to RC3. With a large selection of profiles and fittings, forster fuego light can be used in a wide range of applications with a high degree of design freedom.

Your benefits

- Uncompromising smoke and fire protection
- High multi-functionality
- Narrow face width for high transparency

Technical specifications

Material versions

Available as CO₂-reduced low carbon emission steel
Steel zinc magnesium
Brushed stainless steel

Face widths

Door leaf with frame from 110 mm

Fixed glazing from 50 mm

Dimensions

Inside width single-leaf (W×H): max. 1400 × 3000 mm

Inside width double-leaf (W×H): max. 2830 × 3000 mm

Fixed glazing (W×H): unlimited × 4000 mm

Fittings

Attached and concealed flush fittings

Leaf weight: max. 420 kg

RC2: Mortise locks without supplementary shootbolt to leaf height of 2500 mm

RC2: Mortise locks with supplementary top shootbolt from leaf height of 2500 mm

RC2: Multi-point lock, optionally motorised

RC3: Safety multi-point locking system, optionally available in mechanical, motorised or lever-operated versions

System features

Design variants:

Revolving door 1-/2-leaf, with optional sidelight and fanlight

Fixed glazing

Flush sheet metal door

Structural depth 65 mm

Prepared profiles for efficient processing

Use of broad profiles of up to 105 mm possible

Glazing beads clipped in steel up to RC2 or screwed into steel up to RC3

Wet and dry glazing

Performance characteristics*

Environmental Product Declaration (EPD) according to ISO 14025 and EN 15804

Fire protection EI₂30/EI₂60/EI₁30 in accordance with EN 1634-1

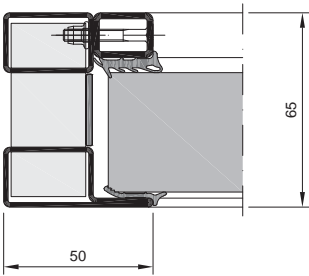
Smoke protection S_a or S₂₀₀ in accordance with EN 1634-3

Durability of self-closing property Class 8 according to EN 12400 (tested up to 1 million cycles according to EN 1191 also with automatic door opener)

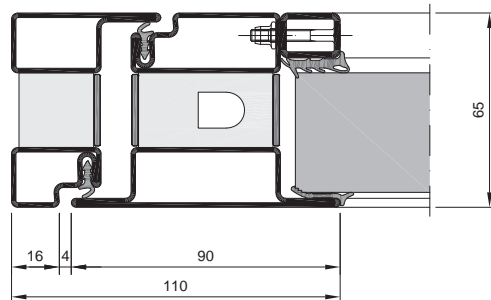
Doors for escape and emergency routes (partial and full panic) according to EN 179 and EN 1125

Threshold-free and barrier-free according to DIN 18040

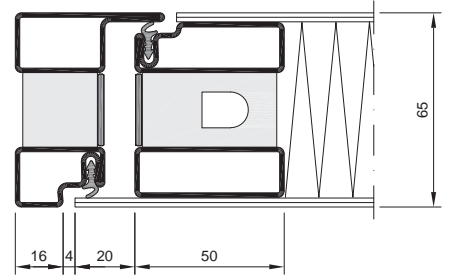
*Take note of the country-specific approvals and requirements



Fixed glazing



Door leaf
Frame combination
glazed



Door leaf
Frame combination
Flush sheet metal

The forster presto 50 RC2 system is primarily for indoor use and – despite its shallow construction depth of just 50 mm – is particularly robust thanks to the welded connection of the profiles. The low-maintenance solution can be supplemented with diverse security options and thus offers a huge number of variants for single- and double-leaf doors – from fire and smoke protection to barrier-free access to panic door closures.

Designs with burglar resistance are also possible for all door variants at a very reasonable price: The system can be upgraded with little effort for burglar resistance up to protection class RC2 with anti-panic, and is also available as a flush sheet metal door. Being made of 100% steel or stainless steel, forster presto 50 RC2 is also very durable and fully recyclable.

Your benefits

- Multi-functional and versatile
- Burglar resistance up to RC2
- Made of steel or stainless steel

Technical specifications

Material versions

Available as CO₂-reduced low carbon emission steel
Bright steel
Steel zinc magnesium
Brushed stainless steel

Face widths

Door leaf with frame from 120 mm
Fixed glazing from 40 mm

Dimensions

Inside width single-leaf (W×H): max. 1400 × 3000 mm
Inside width double-leaf (W×H): max. 2830 × 3000 mm
Fixed glazing (W×H): unlimited x 5000 mm

Fittings

Attached and concealed flush fittings
Leaf weight: max. 410 kg
Mortise locks without supplementary shootbolt to leaf height of 2500 mm
Mortise locks with supplementary top shootbolt from leaf height of 2500 mm

System features

Design variants:
Revolving door 1-/2-leaf, with optional sidelight and fanlight
Fixed glazing
Flush sheet metal door
Use of broad profiles of up to 80 mm possible
Glazing beads clipped or screwed into steel
Wet and dry glazing

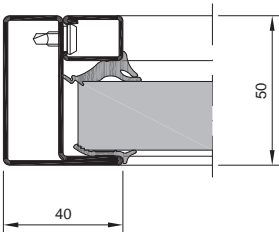
Performance characteristics*

Environmental Product Declaration (EPD) according to ISO 14025 and EN 15804
CE marking according to EN 16034 and EN 14351-1
Fire protection E30 according to EN 1634-1
Smoke protection S_a or S₂₀₀ in accordance with EN 1634-3
Durability of self-closing property Class 8 according to EN 12400 (tested up to 1 million cycles according to EN 1191 also with automatic door opener)
Doors for escape and emergency routes (partial and full panic) according to EN 179 and EN 1125
Threshold-free and barrier-free according to DIN 18040

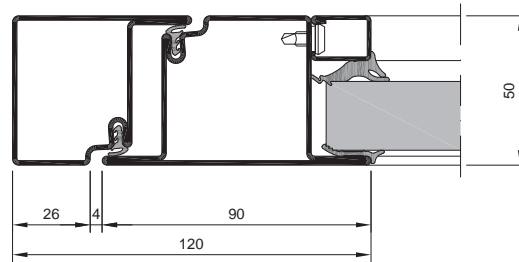
*Take note of the country-specific approvals and requirements



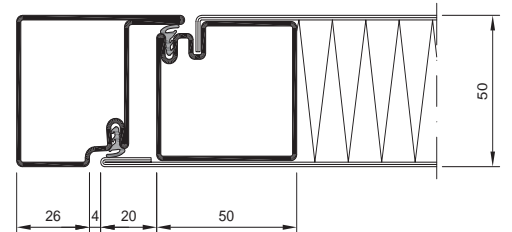
- 
 Low carbon
emission steel
- 
 EPD
- 
 Burglar
resistance
- 
 Durability
- 
 Max.
dimensions



Fixed glazings



Door leaf
Frame combination
glazed



Door leaf
Frame combination
flush sheet metal

For even more stability and security, forster presto 60s RC3 is the right choice for you: The low-maintenance system for single- and double-leaf doors and fixed glazing – mainly for indoor use – delivers better statics with its increased material thickness. In addition, forster presto 60s can be configured with various security functions such as burglar resistance up to class RC3.

The forster presto 60s RC3 burglar-resistant system can be used not only for fire and smoke protection doors but also for barrier-free revolving doors with anti-panic function. As such, our particularly durable and secure solution with its 2 mm-thick profiles made of 100% steel offers a high level of security in high-footfall buildings.

Your benefits

- Steel profiles with increased wall thickness
- Burglar resistance up to RC3
- Construction depth of 60 mm

Technical specifications

Material versions

Available as CO₂-reduced low carbon emission steel
Bright steel

Face widths

Door leaf with frame from 132 mm

Fixed glazing from 40 mm

Dimensions

Inside width single-leaf (W×H): max. 1400 × 3000 mm

Inside width double-leaf (W×H): max. 2830 × 3000 mm

Fixed glazing (W×H): unlimited x 5000 mm

Fittings

Attached and concealed flush fittings

Leaf weight: max. 410 kg

Safety multi-point locking system, optionally available in mechanical, motorised or lever-operated versions

System features

Design variants:

Revolving door 1-/2-leaf, with optional sidelight and fanlight

Fixed glazing

Glazing beads screwed into steel

Wet and dry glazing

Performance characteristics*

Environmental Product Declaration (EPD) according to ISO 14025 and EN 15804

CE marking according to EN 16034 and EN 14351-1

Fire protection E30 according to EN 1634-1

Smoke protection S_a or S₂₀₀ in accordance with EN 1634-3

Durability of self-closing properties Class 8 according to EN 12400 (tested up to 1 million cycles according to EN 1191 also with automatic door opener)

Doors for escape and emergency routes (partial and full panic) according to EN 179 and EN 1125

Threshold-free and barrier-free according to DIN 18040

*Take note of the country-specific approvals and requirements



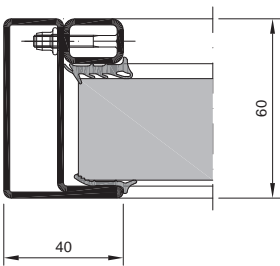

 Low carbon
 emission steel


 EPD

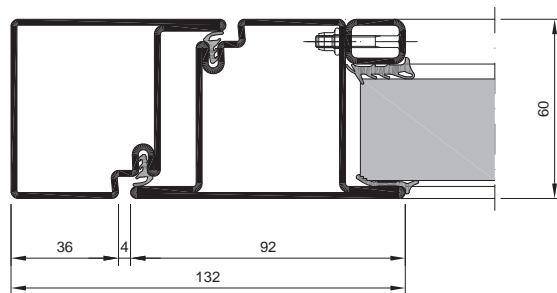

 Burglar
 resistance


 Durability


 Max.
 dimensions



Fixed glazing



Door leaf
Frame combination glazed

forster unico

Stable and secure

The versatile forster unico system stands out first and foremost thanks to its excellent thermal and sound insulation values and meets the desired physical building requirements – even in large dimensions. Combined with burglar resistance up to RC3, our multi-talented forster unico offers a particularly high level of security for outdoor applications.

The single- and double-leaf RC outside doors made of 100% recyclable steel or stainless steel are synonymous with contemporary energy efficiency and environmentally friendly use of materials. As such, the system allows for responsible and sustainable construction – paired with an attractive design and strong security options.

Your benefits

- Maximum stability and security
- Burglar resistance up to RC3
- 100% recyclable

Technical specifications

Material versions

Available as CO₂-reduced low carbon emission steel
Bright steel
Steel zinc magnesium
Brushed stainless steel

Face widths

Door leaf with frame from 110 mm
Fixed glazing from 50 mm

Dimensions

Inside width single-leaf (W×H): max. 1400 × 3000 mm
Inside width double-leaf (W×H): max. 2830 × 3000 mm
Fixed glazing (W×H): unlimited x 5000 mm

Fittings

Attached and concealed flush fittings
Leaf weight: max. 410 kg
RC2: Mortise locks without supplementary shootbolt to leaf height of 2500 mm
RC2: Mortise locks with supplementary top shootbolt from leaf height of 2500 mm
RC2: Multi-point lock, optionally motorised
RC3: Safety multi-point locking system, optionally available in mechanical, motorised or lever-operated versions

System features

Design variants:
Revolving door 1-/2-leaf, with optional sidelight and fanlight
Fixed glazing
Flush sheet metal door
Construction depth: 70 mm
Prepared profiles and slide-in-strips for efficient processing up
Use of broad profiles of up to 205 mm possible
Glazing beads clipped in steel up to RC2 or screwed into steel up to RC3
Wet and dry glazing

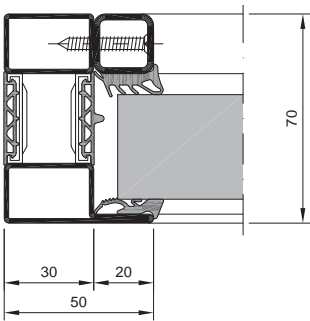
Performance characteristics*

EPD Environmental Product Declaration according to ISO 14025 and EN 15804
CE marking according to EN 14351-1
Thermal insulation
Door U_D up to 0.9 W/(m²·K)
Fixed glazing U_w up to 0.63 W/(m²·K)
Durability of self-closing property Class 8 according to EN 12400 (tested up to 1 million cycles according to EN 1191 with automatic door opener)
Doors for escape and emergency routes (partial and full panic) according to EN 179 and EN 1125
Resistance to wind loads Class C3/B3 according to EN 12210
Watertightness Class 3A according to EN 12208
Air permeability: class 4 according to EN 12207
Impact resistance class 1 according to EN 13049
Threshold-free and barrier-free according to DIN 18040
Sound insulation up to R_w = 46 dB according to EN ISO 140-3

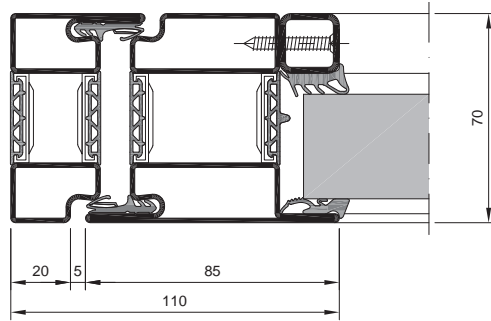
*Take note of the country-specific approvals and requirements



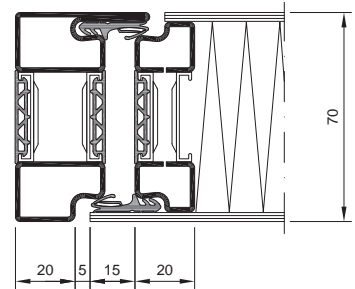
- 
 Low carbon
emission steel
- 
 EPD
- 
 100 % steel
- 
 Insulation
- 
 Max.
dimensions



Fixed glazing



Door leaf
Frame combination
Glazed



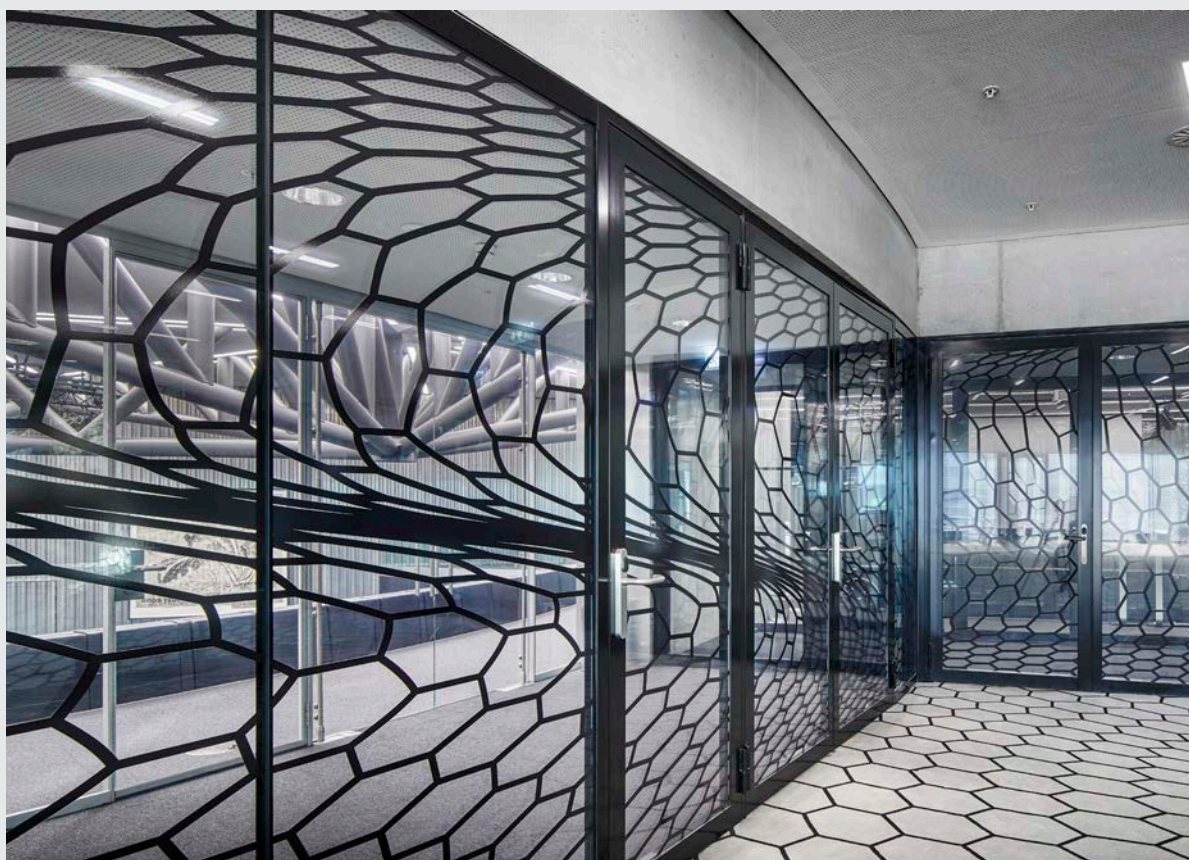
Door leaf
Frame combination
Flush sheet metal

Reference projects with burglar-resistant doors

A large number of successful projects prove just how versatile forster's burglar-resistant door solutions can be – completely tailored to the respective needs and requirements of the building type and application. Let yourself be inspired by our reference projects!



*Collège du Martinet, Rolle, Switzerland
forster fuego light
Image: Damian Poffet*



*Maison de la Paix, Geneva, Switzerland
forster fuego light
Image: Damian Poffet*



*Cantonal Museum of Fine Arts (MCBA),
Lausanne, Switzerland
forster unico*



*Porcelain collection
Dresden Zwinger, Germany
forster presto*

Technical data

		fuego light	presto 50	presto 60s	unico	
Availability	RC2	●	●	●*	●	
	RC3	●		●	●	
Material versions	Steel	●	●	●	●	
	Stainless	●	●		●	
Dimensions	RC2	Inside width single-leaf (W×H): max. 1400 × 3000 mm Inside width double-leaf (W×H): max. 2830 × 3000 mm Fixed glazing (W×H): unlimited × max. 5000 mm				
	RC3	(Fixed glazing fuego light (W×H): unlimited × max. 4000 mm)				
Fittings and accessories	RC2	Single locking Clipped/screwed glazing beads Attached and concealed flush door fittings				
	RC3	Safety multi-point lock Screwed glazing beads Attached and concealed flush door fittings				
System features	Revolving door, 1-/2-leaf, with optional sidelight	RC2	●	●	●	●
		RC3	●		●	●
	Fixed glazing	RC2	●	●	●	●
		RC3	●		●	●
	Sheet metal door/ sheet metal panels	RC2	●	●	●	●
		RC3	●			●
	Anti-panic function on active leaf and inactive leaf	RC2	●	●	●	●
		RC3	●		●	●
	Threshold-free/ barrier-free	RC2	●	●	●	●
		RC3	●		●	●
Alternative glazing versions	RC2	P4A/P6B**	P4A/P8B**	P4A/P8B**	P4A/P8B**	
	RC3	P5A/P8B**		P5A/P8B**	P5A/P8B**	
Sustainability	EPD	●	●	●	●	
	LCES	●	●	●	●	

*Only available as customised solution on request

**Glazing variant depending on the requirements for escape and emergency routes

Notes:

- Forster also offers solutions from RC1 to RC2 N
- Take note of the country-specific approvals and requirements

Steel is our nature.

908342/80001647/12-24

For us, steel is a matter of the heart. We develop long-lasting systems for attractive and energy-efficient architecture.

Forster Profile Systems develops and manufactures safe, energy-efficient solutions in steel and stainless steel for doors, windows and facades in Switzerland. Forster works with its own branches in over 20 countries – and exclusive sales partners in around 10 more. In-house consultants are on hand to assist our customers at sites ranging from Europe and the Middle East to Asia and North America. Forster systems are used for building shells and interiors. This includes market-leading solutions that meet

the strictest requirements and standards in terms of thermal insulation, plus safety applications such as fire protection, burglar resistance and bullet resistance. The product range is rounded off by matching accessories. Our customers and business partners in architecture, planning and construction can also count on comprehensive services for their respective industry.

Forster Profilsysteme AG | CH-8590 Romanshorn
info@forstersystems.com | forstersystems.com

forster