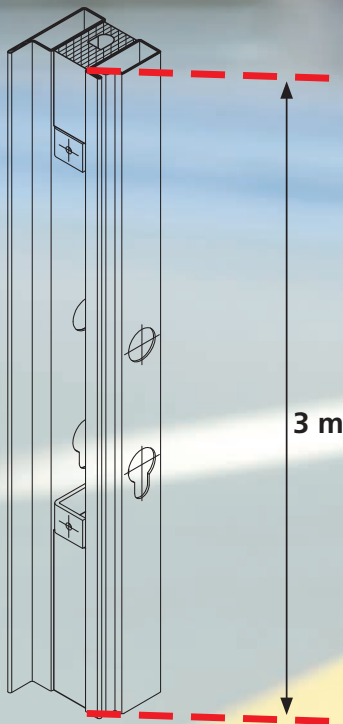


new@forster

Vorgerichtete Profile in neuer Länge Nouvelle longueur des profilés préentailles Prepared profiles in a new length



Vorgerichtete Profile für den Schlosseinbau Forster fuego light EI30

- Mehr Profil zum gleichen Preis
- **NEU** 3.0 m statt 2.53 m Länge
- Oberfläche Zink Magnesium
- Umstellung ab sofort

Profilés préentailles pour le montage de la serrure Forster fuego light EI30.

- Plus de profilé au même prix
- **NOUVELLE** longueur de 3.0 m au lieu de 2.53 m
- Surface Zinc Magnésium
- Passage à la nouvelle longueur dès maintenant

Prepared profiles for lock fitting Forster fuego light EI30

- More profile at the same price
- **NEW** length of 3 m instead of 2.53 m
- Surface Zinc Magnesium
- Conversion from now

Vorgerichtete Profile für Schlosseinbau Forster fuego light EI30 in einer neuen Länge von 3 m.

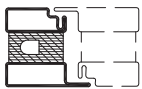
- Mit Zylinderausfräsung RZ/PZ
- Drückerausfräsung DH = 1040 mm
- Ausnehmung für Schlosskasten
- Befestigung für Forster fuego light Systemschlösser
- Länge neu 3.0 m

Nouvelle longueur de 3 m des profilés préentailés pour le montage de la serrure Forster fuego light EI30.

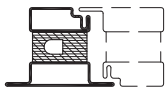
- Avec fraisage pour cylindre CR/CP
- Fraisage pour poignée, hauteur de poignée à 1040 mm
- Entaille pour boîtier de serrure
- Fixation pour serrures Forster fuego light
- Nouvelle longueur 3.0 m

Prepared profiles for lock fitting Forster fuego light EI30 in a new length of 3 m.

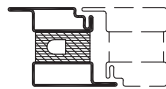
- With cylinder cut-out RC/PC
- Handle cut-out, height 1040 mm
- Recess for lock case
- Fastening for Forster fuego light system locks
- New length of 3.0 m



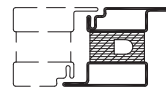
943201



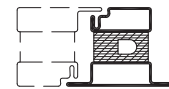
943203



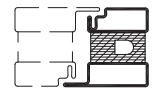
943205



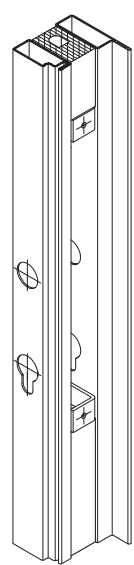
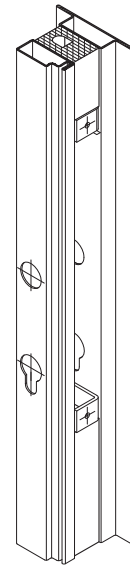
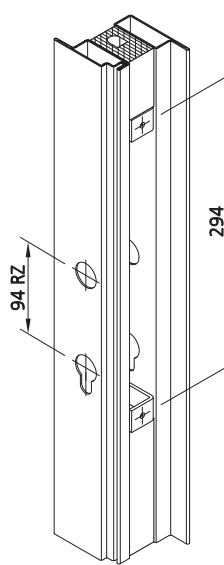
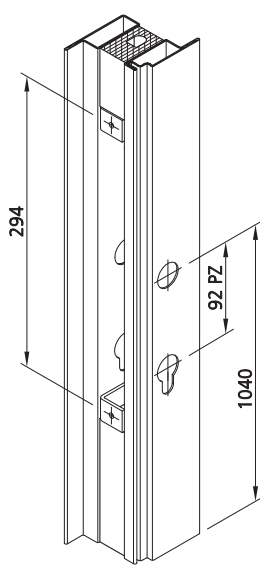
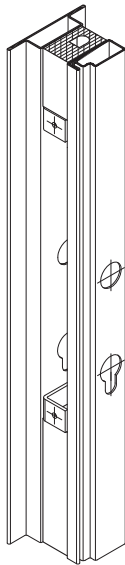
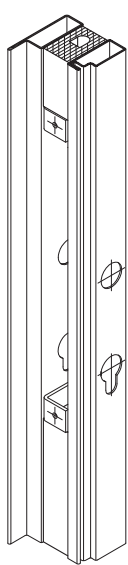
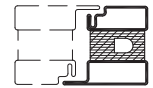
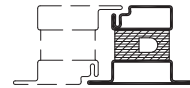
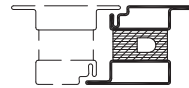
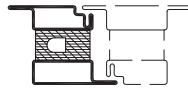
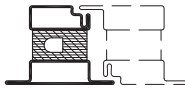
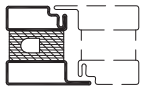
943204



943202



943200



- Artikelnummern bleiben unverändert. Sukzessive Ablösung der bisherigen Profile.
- Umstellung ab sofort.
- Während der Umstellung kann es zu Vermischungen kommen.
- Vorgerichtete Profile EI60/ EI90 und Edelstahl werden zu einem späteren Zeitpunkt ebenfalls umgestellt. Eine entsprechende Information folgt.

- Les numéros d'articles restent inchangés. Remplacement successif des profilés existants.
- Changement dès maintenant.
- Durant la phase de changement, les profilés peuvent être livrés mélangés.
- Les profilés préentailés EI60/ EI90 et en acier inox seront aussi changés ultérieurement. L'information correspondante suivra.

- Item numbers remain unchanged. Successive replacement of the existing profiles.
- Conversion from now.
- On deliveries during the conversion, profiles may be mixed.
- The prepared profiles in stainless steel and EI60/ EI90 will be converted at a later point. The corresponding information will follow.